

# The Changing Face of the Teaching Force in the U.S.

**Richard M. Ingersoll**

**Lisa Merrill**

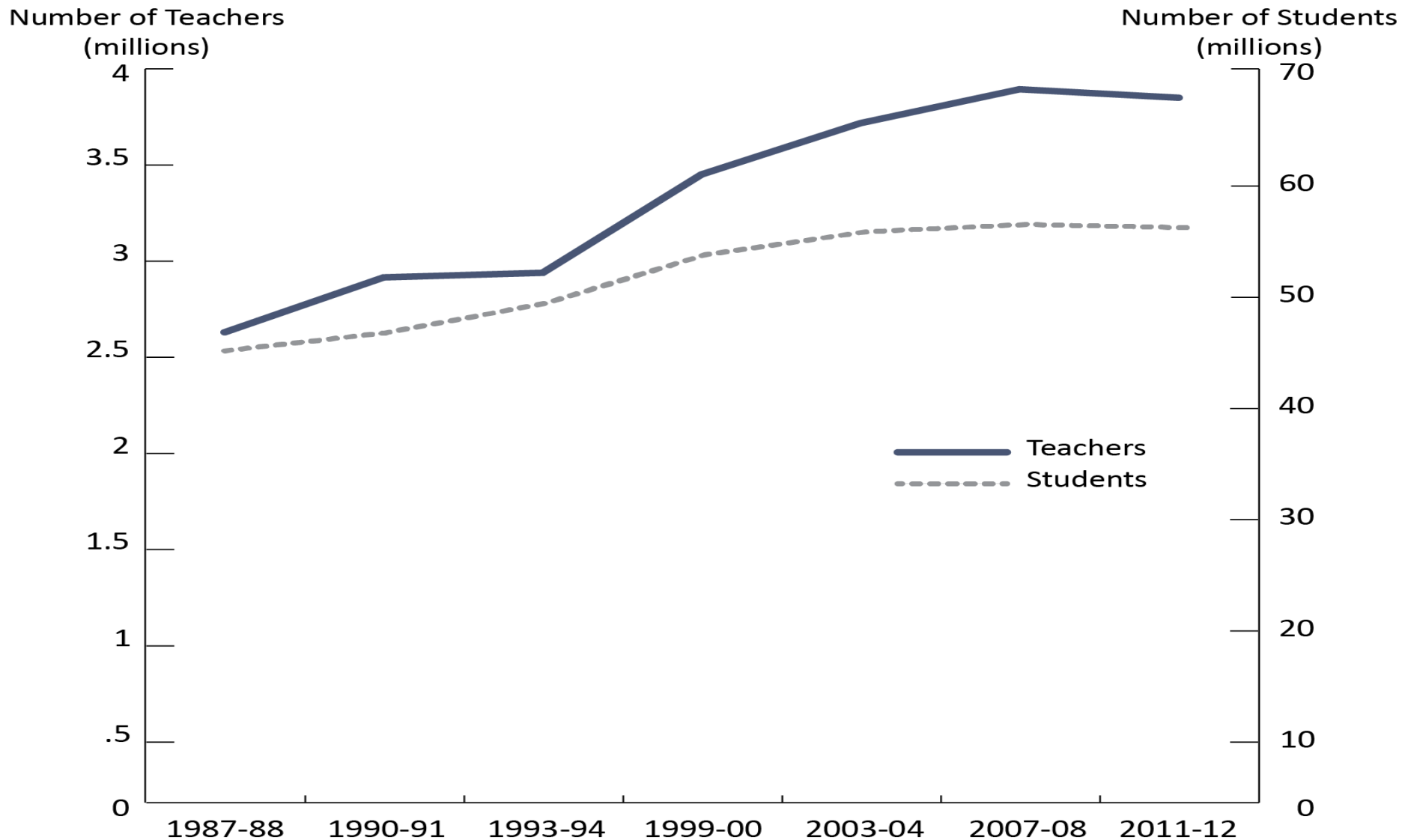
**Daniel Stuckey**

**University of Pennsylvania**

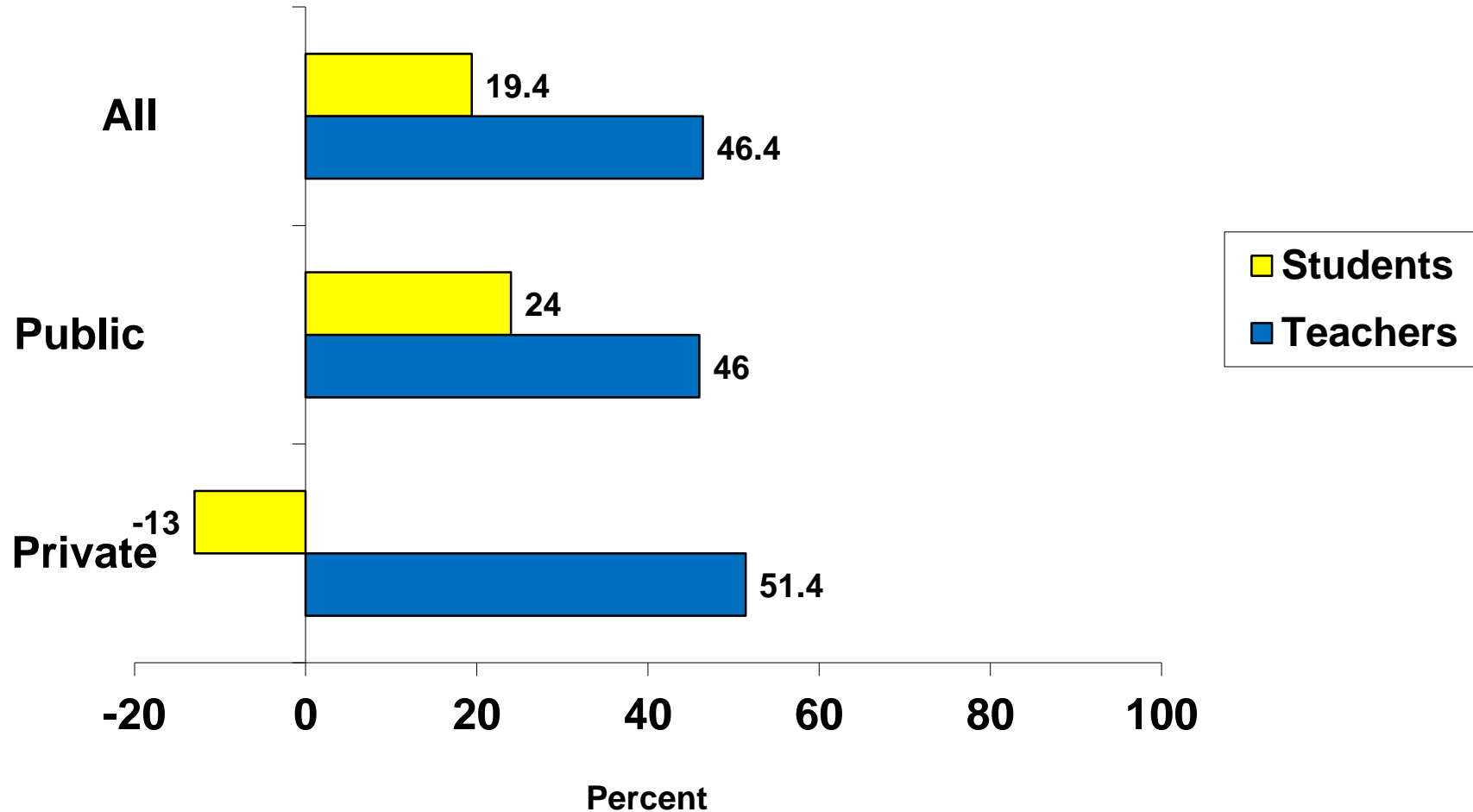
**and**

**Consortium for Policy Research in Education**

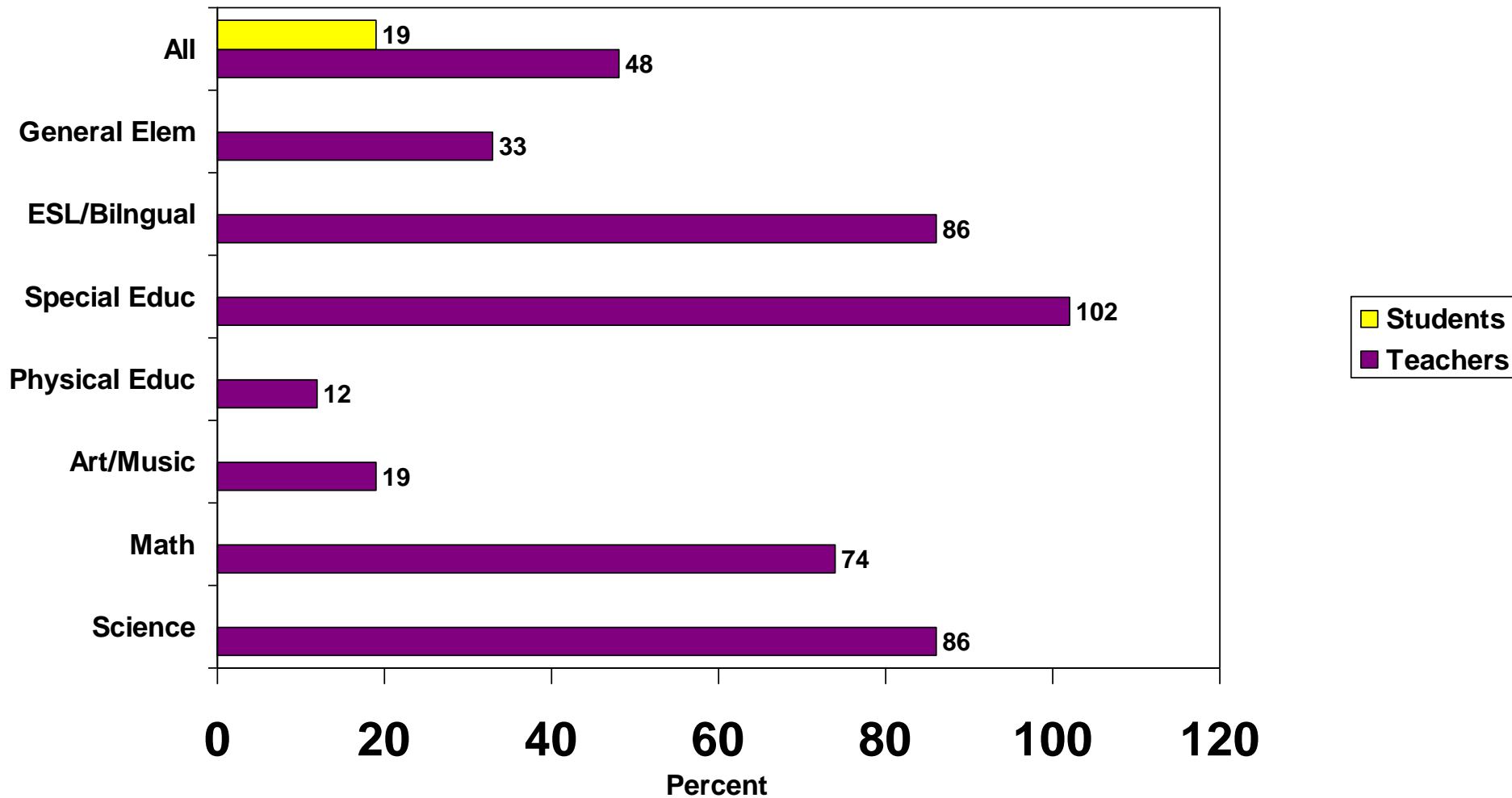
# Number of Elementary and Secondary School Teachers and Students, 1987-88 to 2011-12



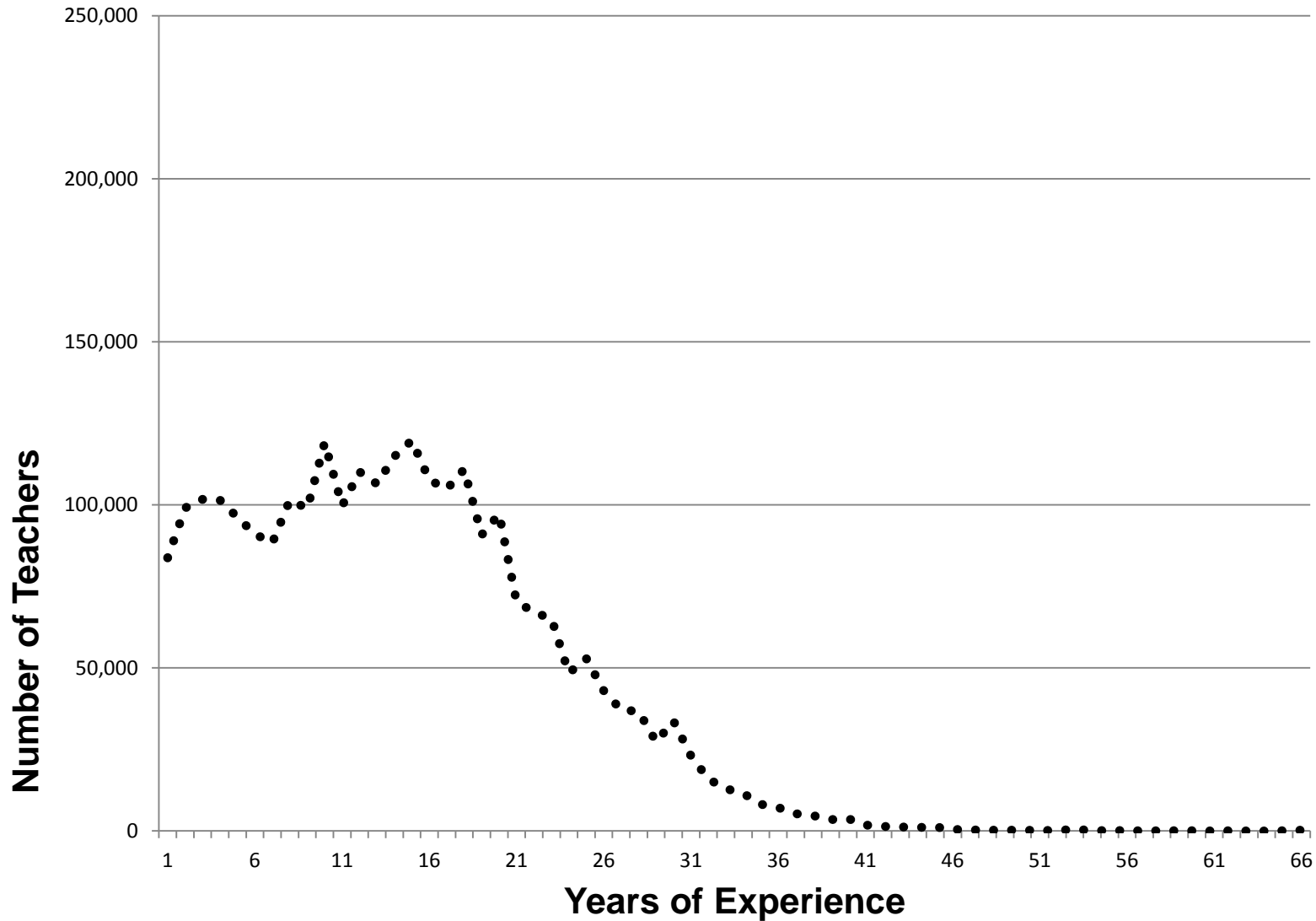
# Percent Increase in Students and Teachers, by School Type, from 1987-88 to 2011-12



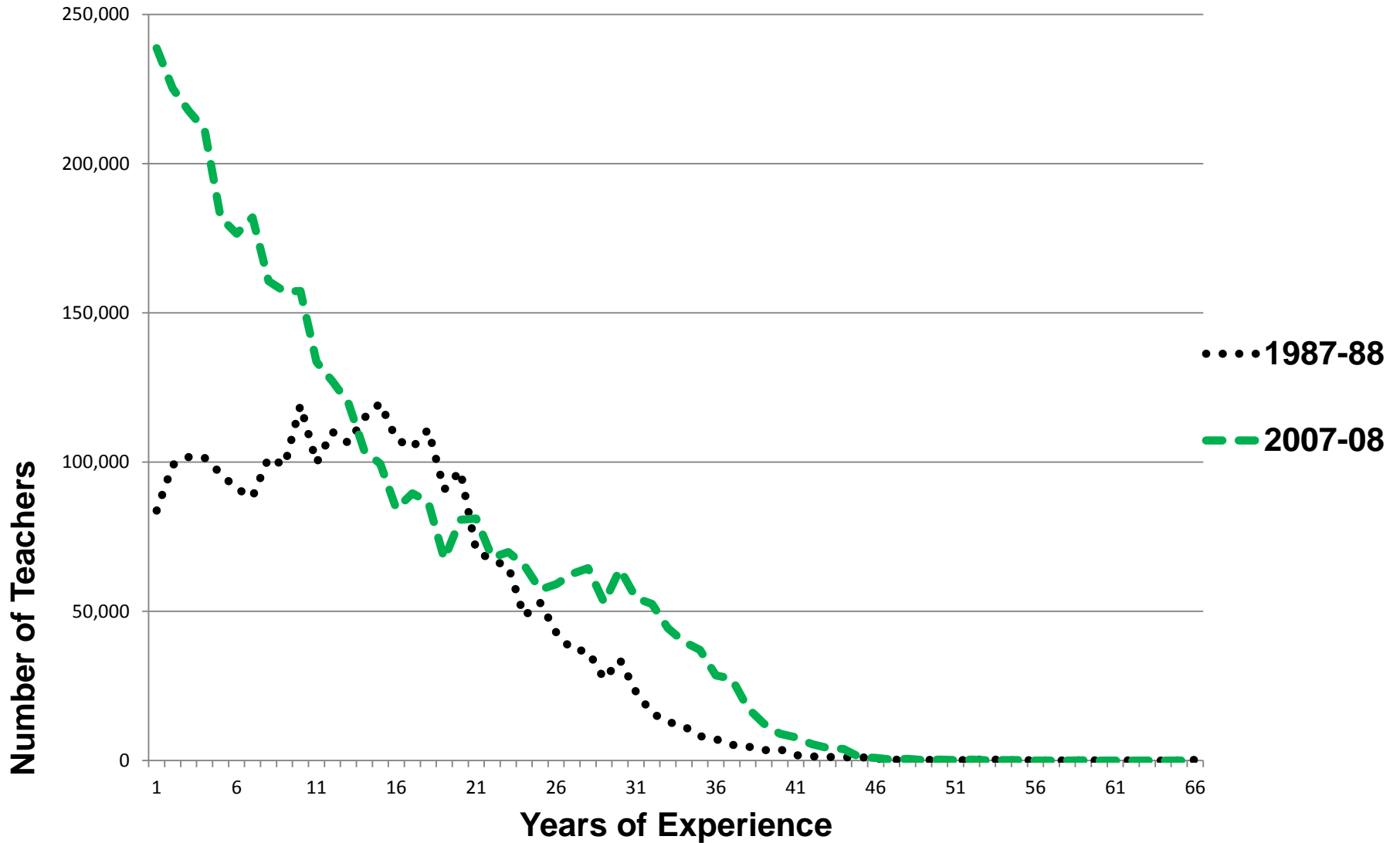
# Percent Increase in Students and Teachers, by Field, from 1987-88 to 2007-08



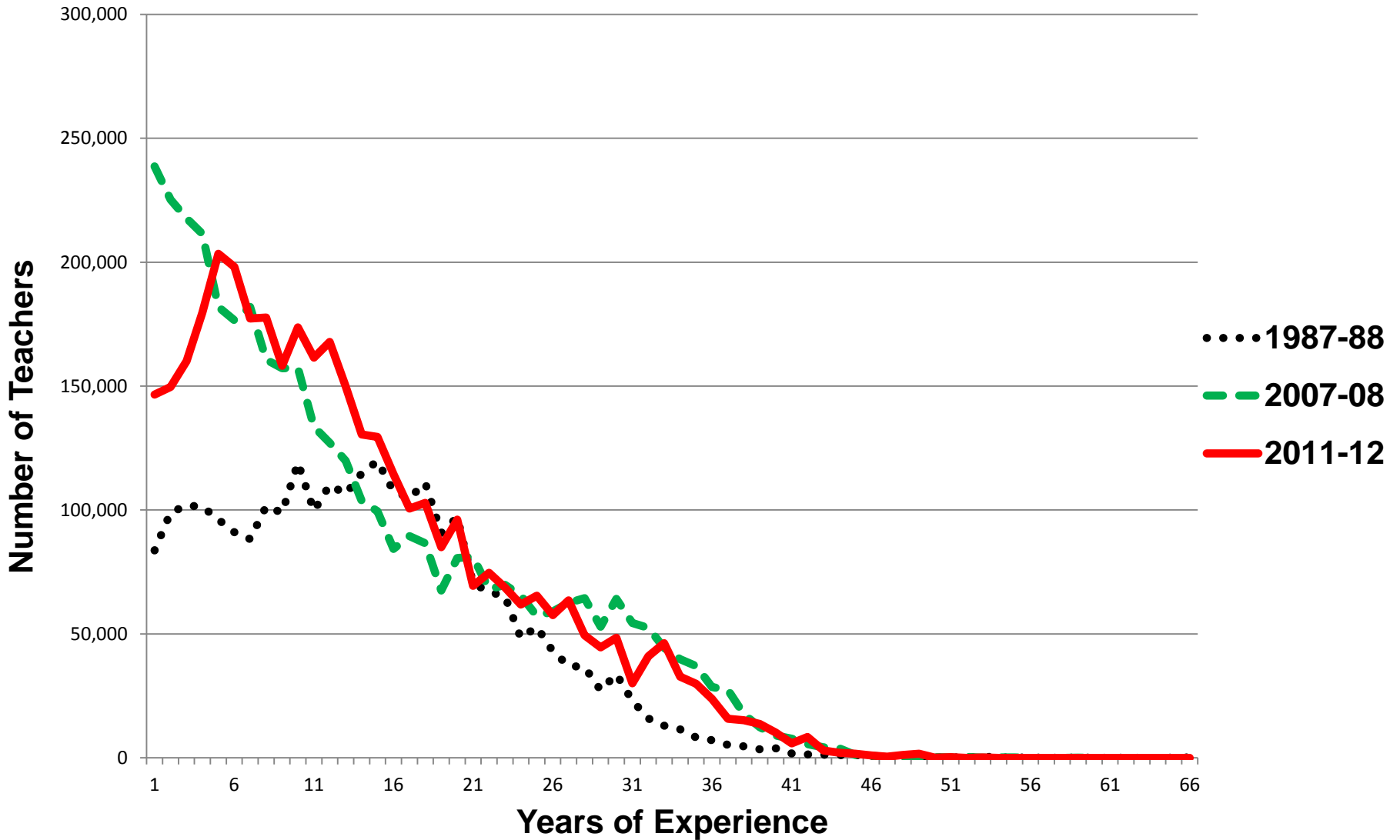
# Teaching Experience of School Teachers, 1987-88



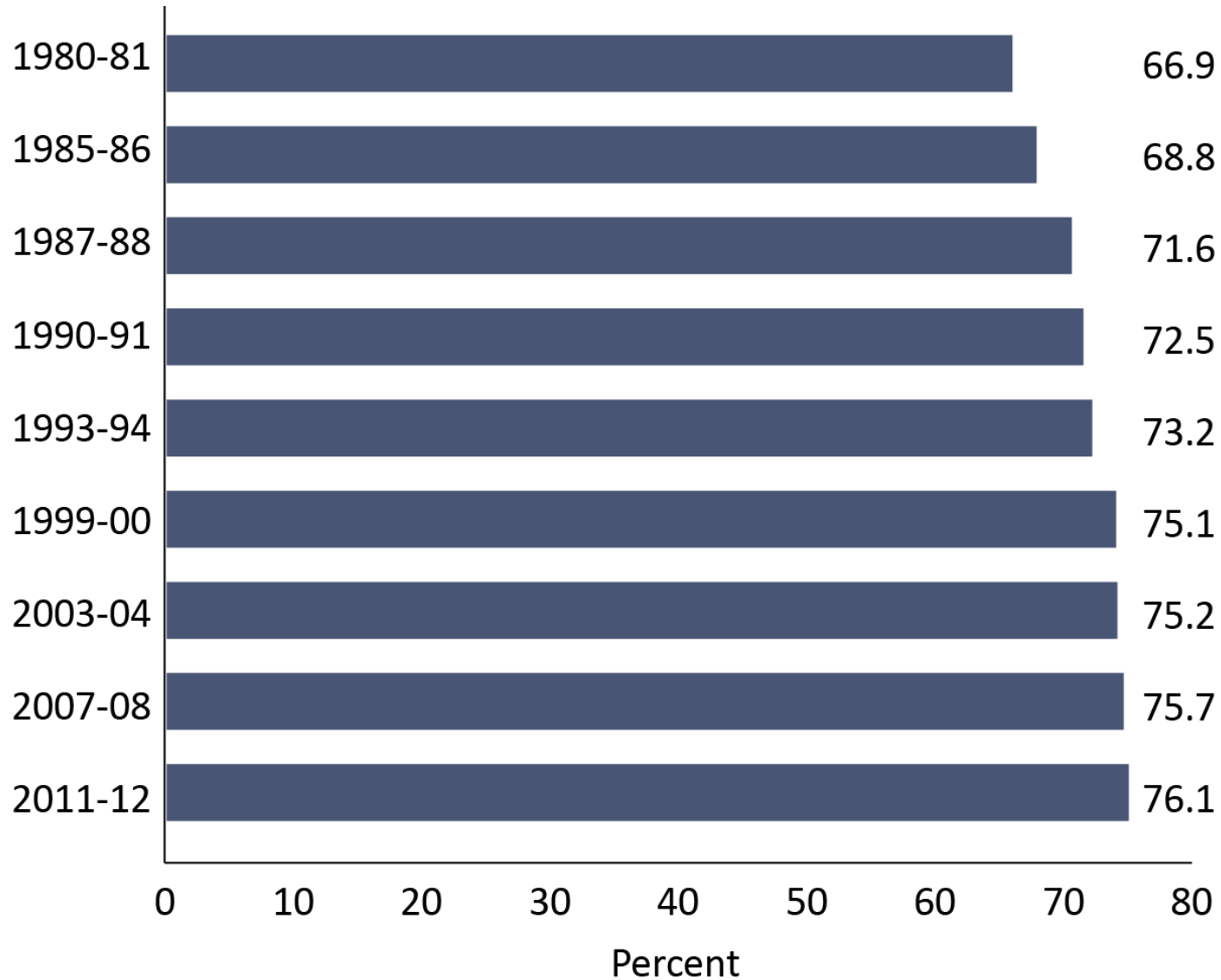
# Teaching Experience of School Teachers, 1987-88 and 2007-08



# Teaching Experience of School Teachers, 1987-88, 2007-08, and 2011-12

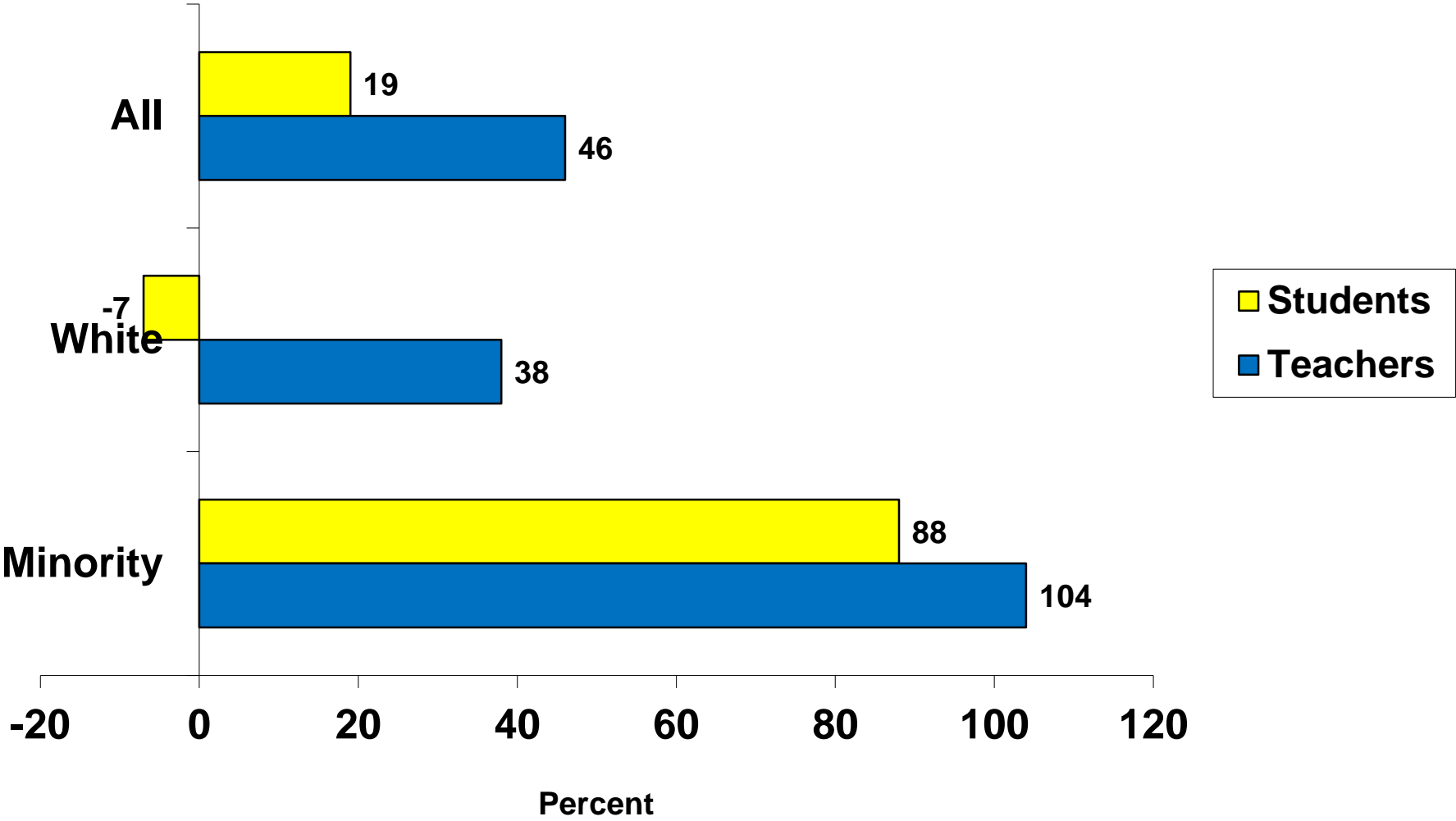


## Percent Female School Teachers, from 1980-81 to 2011-12



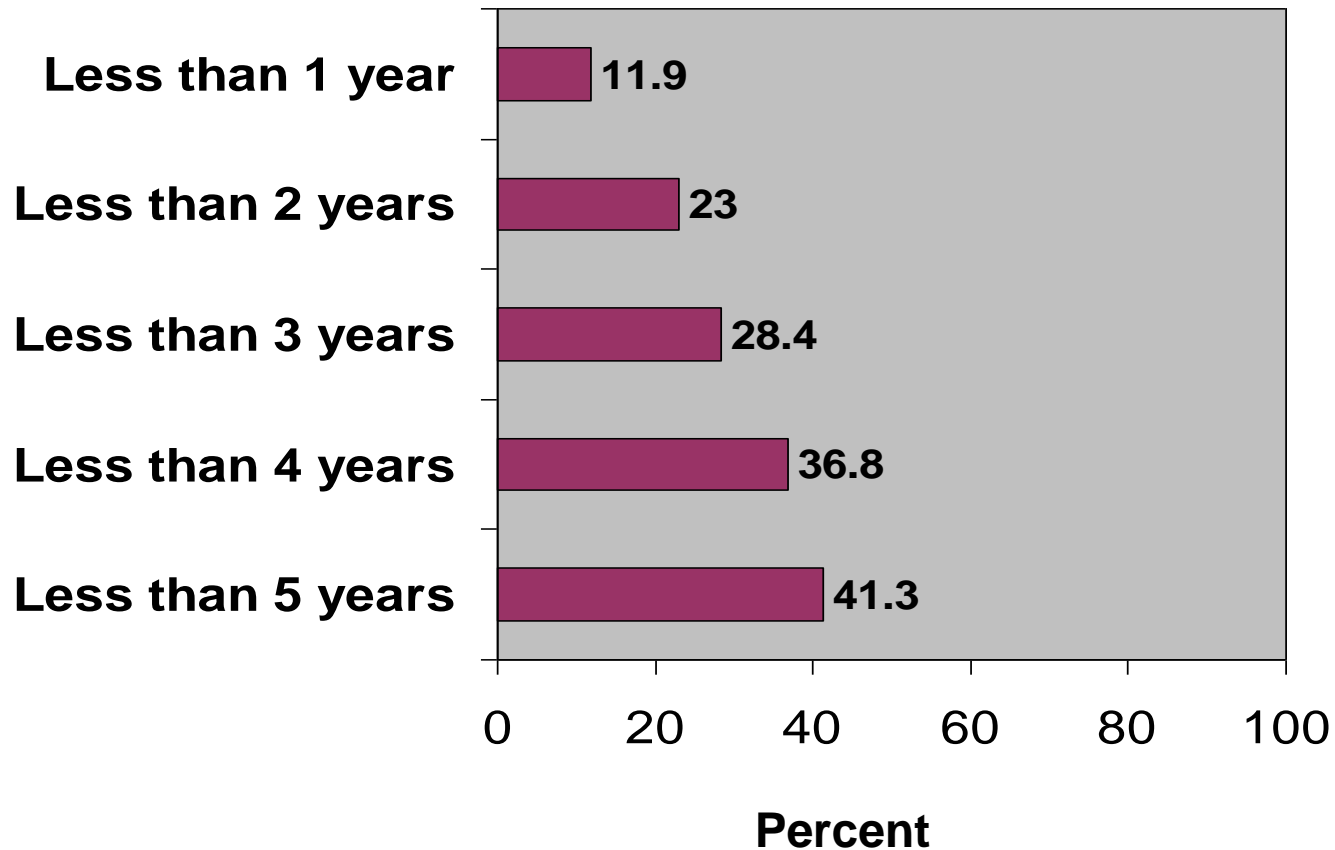


# Percent Increase in Students and Teachers, by Race/ethnicity, from 1987-88 to 2011-12



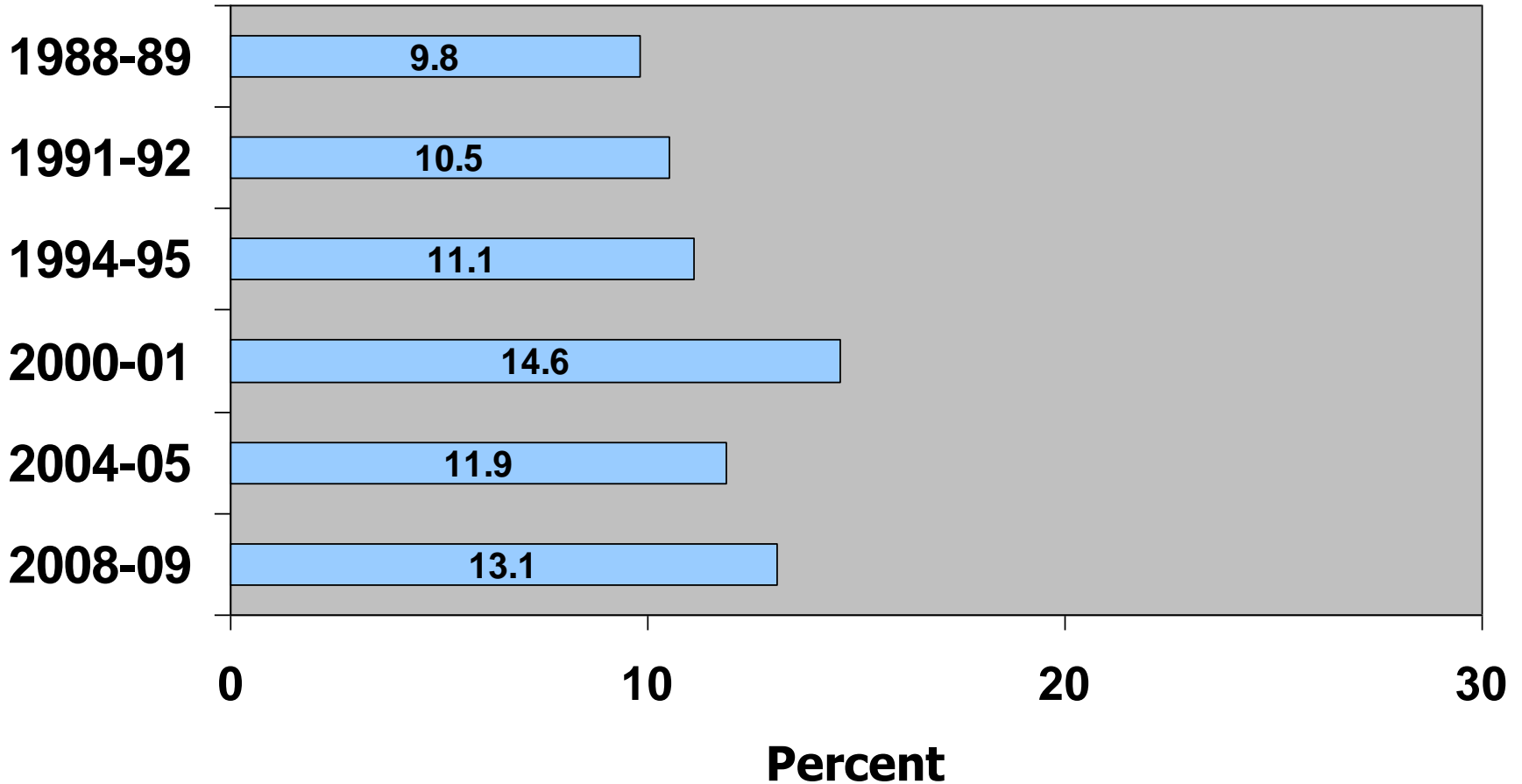
# Cumulative Percent Attrition of Beginning Teachers, by Years of Experience: 1993-2003

(data for years 3,4 and 5 are underestimates because early attrition of some late entrants could not be included)

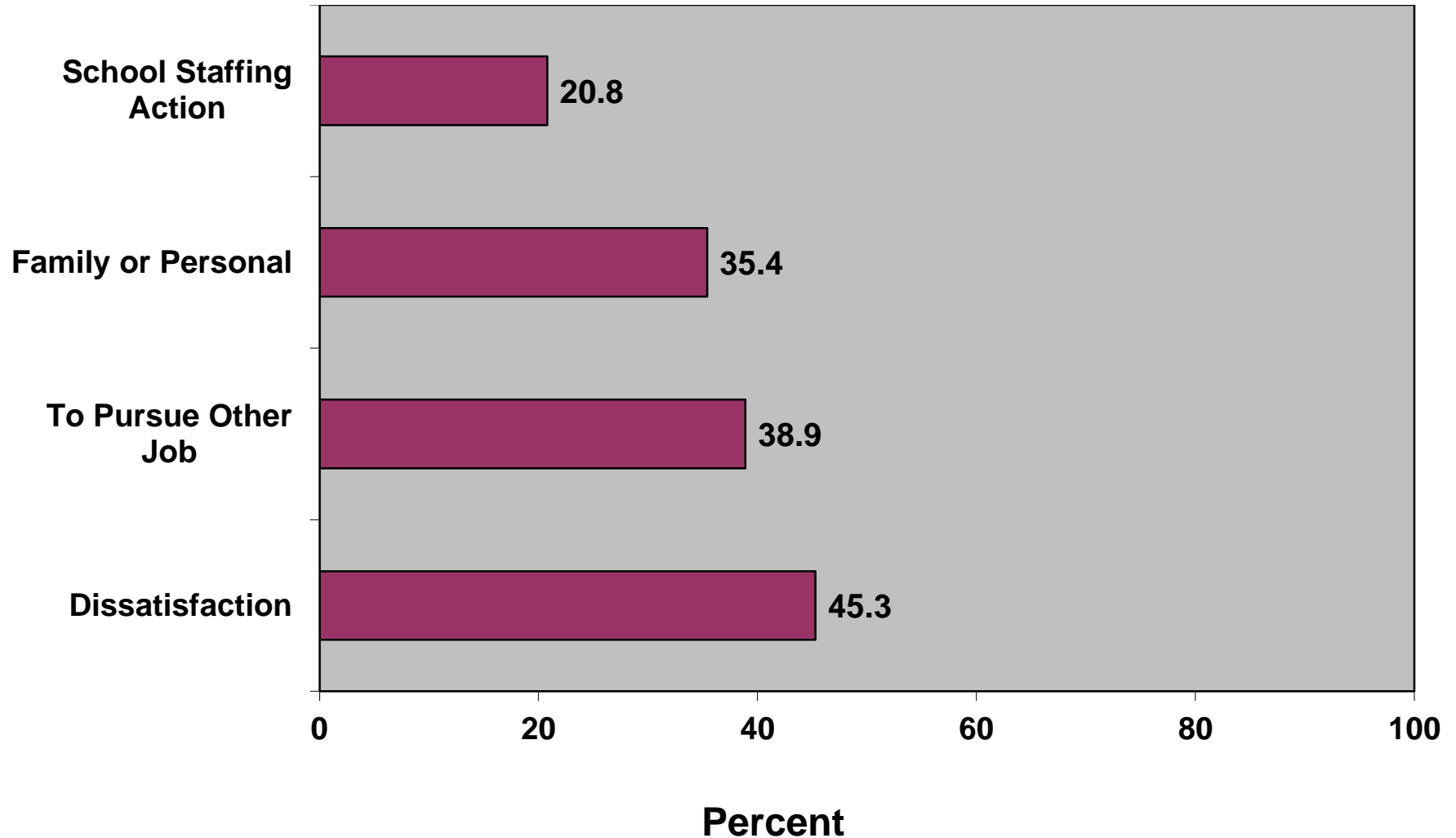


Source: Perda, D. 2013. *Transitions Into and Out of Teaching: A Longitudinal Analysis of Early Career Teacher Turnover*. PhD Dissertation, University of Pennsylvania.

# Percent Annual 1<sup>st</sup>-Year Teacher Attrition, 1988-89 to 2008-09



# Percent 1<sup>st</sup>-Yr. School Teachers Reporting that Various Reasons Were Important for their Attrition, 2008-09





**For Further Information, Copies of  
Articles, Reports, etc.:**

---

**[www.gse.upenn.edu/faculty/ingersoll](http://www.gse.upenn.edu/faculty/ingersoll)**